



A Weekly Update
For The Employees of
North Central Health Care



PHOTO OF THE WEEK



NEWS YOU CAN USE



WEEKLY CONNECTION WITH GARY OLSEN

Fall is finally in the air, and with October comes Halloween and trick-or-treating. This week, I wanted to share something fun in my *News You Can Use* article and give you a little glimpse into my life.

My wife has a fascination with the myth of Bigfoot. She watches every show about Bigfoot on Discovery Plus and is a true believer. While I've watched some of the shows with her, I'm still a skeptic—

though I'll admit, there are some things they find that I can't quite explain. My wife likes to joke that she's slowly converting me.

Because of her enthusiasm for the subject, I decided to surprise her with a Bigfoot cutout for our yard. She loved it so much that she started decorating it for each holiday. For Halloween, she even dressed it up like a witch and named her 'Sassy.' I've included a picture below so you can see Sassy in all her Halloween glory!

Marriage requires a strong partnership and sometimes that means stepping outside of your comfort zone to make your spouse happy. As you can see, I'm embracing my wife's fascination with Bigfoot, even if I'm not a believer—yet. But it's brought a lot of laughs into our home.

Just like a successful marriage relies on partnership, our organization also relies very heavily on partnerships, one of our CORE values. The connections we share with our county partners, law enforcement, and the medical community, are essential to our mission. Let's continue to nurture these partnerships at NCHC.

Gary D. Olsen

Gary Olsen
Executive Director



Meet Our New Employees	2
Technology News.....	3
Happy 150th Anniversary Lincoln County	4
October Organizational Learning Requirements	5
Vaccination News.....	6
Google Review Shout Out	7
Open Enrollment	8
Foodie Forecast	9-10

Person-Centered
Shout out



Paia Lor, Community Treatment

Your willingness to take on new tasks - filling in for group and now taking one over.

Shared By:
Jen Jacobson



Occurrence Reporting Hotline

x4488 or 715.848.4488



Only significant or sentinel events requiring immediate notification to this hotline.



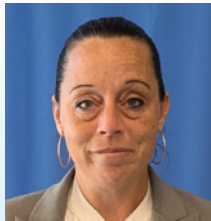
WELCOME THESE *New Employees* TO THE TEAM!

These employees were welcomed at Orientation October 7, 2024!

Pine Crest



Jade Weinzatl –
CNA



Rochelle Smith –
Hospitality Assistant

Pharmacy

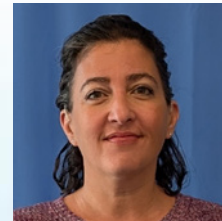


Nichole Blennert –
Pharmacy Tech

Outpatient Services

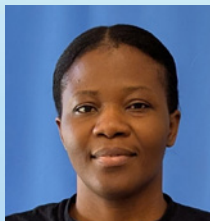


Erin Cimino - MH
Therapist



Leanne Germinaro -
Registration Specialist

Mount View Care Center



Tochi Nmeribe –
Registered Nurse

Lakeside Recovery



Jessica Smith -
Behavioral Health
Professional

Youth Hospital



Scott Bever -
MH/Subs Abuse
Therapist

Community Treatment Youth



Kendall Kuenzli -
Case Manager

Crisis Services



Kevin Martin - Crisis
Professional



Terry Tackes - Crisis
Professional

IMS

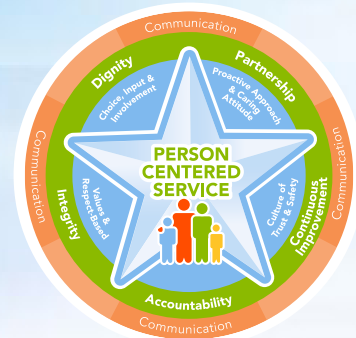


Larry Thao -
Solutions Analyst



Rouhan Richardt -
Solutions Analyst

*We are so excited to have
you on our team!*





PHISHING AND SOCIAL ENGINEERING WEBINAR

Thursday, October 24 at 10:30 am

The Information Security team wants to thank everyone who tuned in for our webinar on Multifactor Authentication for week two of Cybersecurity Awareness Month! We are excited to announce that next week's presentation will be all about phishing and social engineering! We will have a lot of examples and stories covering these topics. We hope to see you all there on Thursday from 10:30 to 11:00 am!

Webinar Teams Link: <https://bit.ly/48980pW>



Watch the Phishing and Social Engineering Webinar



WINDOWS 11 UPGRADES RESUMING!

Please Review This Notice for Upcoming Computer Upgrades

WINDOWS 11 UPGRADES

Last month, CCITC started Windows 11 upgrades in select programs at NCHC. These began as a manual push to upgrade in which CCITC was onsite assisting users/devices through the upgrade process. They worked out some kinks and will now resume moving forward with Windows 11 upgrades to more users. These upgrades will be pushed out to your computers automatically over a period of time. Each user can accept the upgrade or postpone it when prompted.

What Can I Expect with the Windows Upgrade?

Windows 11 will download in the background when you are online, you will then receive a prompt letting you know when it's ready to reboot and apply. The reboot to apply the changes typically takes about 20 minutes to complete but may take up to an hour. You should be able to click "later" on the pop-up when needing to re-boot if you were to be in the middle of something.

Find Resources and Knowledge Base Articles

CCITC has published Knowledge Base Articles on TAG to include a few of the key visual and functionality differences between Windows 10 and Windows 11. You can find them here at <https://teamdynamix.co.marathon.wi.us/TDClient/298/Portal/KB/ArticleDet?ID=21035>.

Topics include:

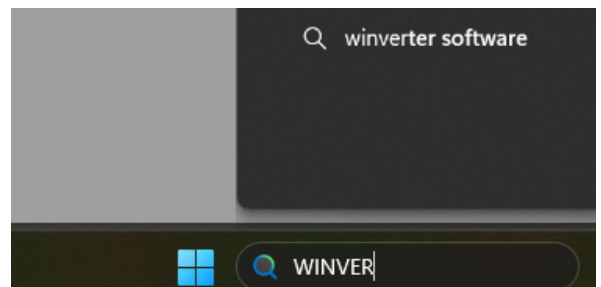
- Windows 11 has a centered task bar
- Windows 11 uses snap layouts
- Windows 11 has a different start menu
- Windows 11 allows for multiple desktop usage
- Windows 11 has a new way to "copy and paste"

Some things you may experience are the settings for sound and Internet connections are now one button that have a pop up menu. Other subtle changes to Windows are that the File Explore and Notepad now have a tab feature when you open up multiple folders or files.

Need More Information or Having Trouble with the Windows Upgrade?

Check out the Knowledge Base Articles above or contact the CCITC Helpdesk 715.261.6710, x6710 or email IT_HELPDESK@co.marathon.wi.us.

***If you are unsure whether you have already received this Windows 11 upgrade, you can check which version you have by typing in WINVER in your taskbar search, click enter, and a window will pop up showing you which version you are currently running. (see below)*



For questions related to secure email, please contact the CCITC Helpdesk 715.261.6710, x6710 or email IT_HELPDESK@co.marathon.wi.us.



PHOTO OF THE WEEK



Lincoln County, WI



HAPPY ANNIVERSARY LINCOLN COUNTY! 150-Year Anniversary

This past weekend Lincoln County celebrated 150 years as a County. Happy Anniversary Lincoln County! Events were held throughout the County with NCHC displaying information and giveaways at the Merrill Expo Center. Thank you to everyone who visited our booth and celebrated along side our Lincoln County Residents!

Thank you to Holly Westberg, Tyler Drake and Natasha Sayles for helping with the booth setup for this awesome event!



NEW!

If your team plays over the weekend, then it's **Football Friday!**

All staff are invited to wear their favorite team's fan gear & Jeans on Fridays during the Football Season.

Now through February 7!



SAFETYZONE NOTICE October 23 Downtime

On Wednesday, October 23rd, from 10:00 PM CST until 11:00 PM CST, SafetyZone will be unavailable due to server maintenance. Please check back and enter any reports after this downtime period.



October 2024 Organizational Learning Modules



Each month staff are assigned 30-60 minutes of organizational training that needs to be completed by the due date.

Trainings Have Been Assigned

Log in to *UKG Pro Learning* and complete the following courses:

- **QPR Gatekeeper Training**
(60 minutes)
- **Complete any outstanding assignments**



North Central Health Care
Person centered. Outcome focused.

**Nursing Home
Halloween Candy Donations**

Halloween is quickly approaching, and the Nursing Home Life Enrichment Departments are in need of small wrapped candies for our annual safe trick-or-treating.

Mount View Care Center Trick-or-Treating
Thursday, October 31 from 3:00-5:00 pm
Candy donations can be dropped off at the Guest Services Desk, Volunteer Office, or with a Mount View Care Center Life Enrichment Team Member.

Pine Crest Trick-or-Treating
Thursday, October 31 from 3:30-5:00 pm
Candy donations can be dropped off at the front desk or in the Life Enrichment Office.

Thank you for your generosity and kindness!

Trick or Treat



Marathon County
Employees Credit Union



Check Out MCECU for All Your Lending Needs!

We have loans to fit all your needs, whether you are buying a home, in need of a new vehicle, refinancing, looking to take a dream vacation, consolidating debt, purchasing recreational vehicles, or for whatever else your heart desires.

Proudly serving NCHC Employees and their Families

Already a member: Thank you
Not a member: Contact us today!

Apply online at www.mcecu.org • 261-7685 for Loan Officer
culoans@co.marathon.wi.us • 400 East Thomas Street



North Central Health Care 2024 EMPLOYEE VACCINATION PROGRAM

**ALL Employees
Must Complete by
November 15**



1

Get your Flu and/or Covid vaccinations.

Provided FREE at Employee Vaccination Clinics or from a NCHC Nurse Vaccinator in your department. You can also get your vaccines at your own expense from provider in community. Remember to get proof of vaccination from provider.

2

Complete the required forms.

- Influenza Vaccination OR Declination Form;
- Covid Vaccination OR Declination Form;
- AND
- TB Risk Assessment Form

3

Return your forms to NCHC Employee Health.

Please place completed forms in an interoffice mail envelope to Renee in Employee Health. All forms are due to Employee Health by November 15, 2024. Employees not in compliance will be removed from the schedule.

EMPLOYEE OPEN VACCINATION CLINICS

No appointment required!

NCHC Wausau Campus Open to all Staff

Location: Blue Jay Room
(Suite B – located next to the MVCC
Administration office just past the Bistro.)

~~9/30... 1:30 – 2:30 pm~~
~~10/2... 7:00 – 9:00 am, 10:30 am – Noon~~
~~10/8... 7:30 – 9:30 am~~
~~10/9... 2:30 – 4:00 pm~~
~~10/16... 9:30 – 11:00 am~~

Note: MVCC staff will have vaccines offered at their upcoming Town Hall Meetings in October, but can attend one of the above dates as well.

Pine Crest Open to all Merrill Center
and Pine Crest Staff

Location: Front Conference room

~~10/17... 6:00 am – 2:30 pm~~
~~10/22... 6:00 am – 10:00 am~~
~~10/24... 1:00 – 4:00 pm~~

2 Dates Left!

Antigo Center

Contact Kristin King for Nurse Vaccinator
appointments.



Visit www.norcen.org/ForEmployees

for more details, FAQ's, and copies of forms!

No Sign-up required for Employee Open Vaccination Clinics.

Questions? Contact your Manager or Employee Health at 715.848.4396

EMPLOYEE SHOUT OUT

NEWS YOU CAN USE

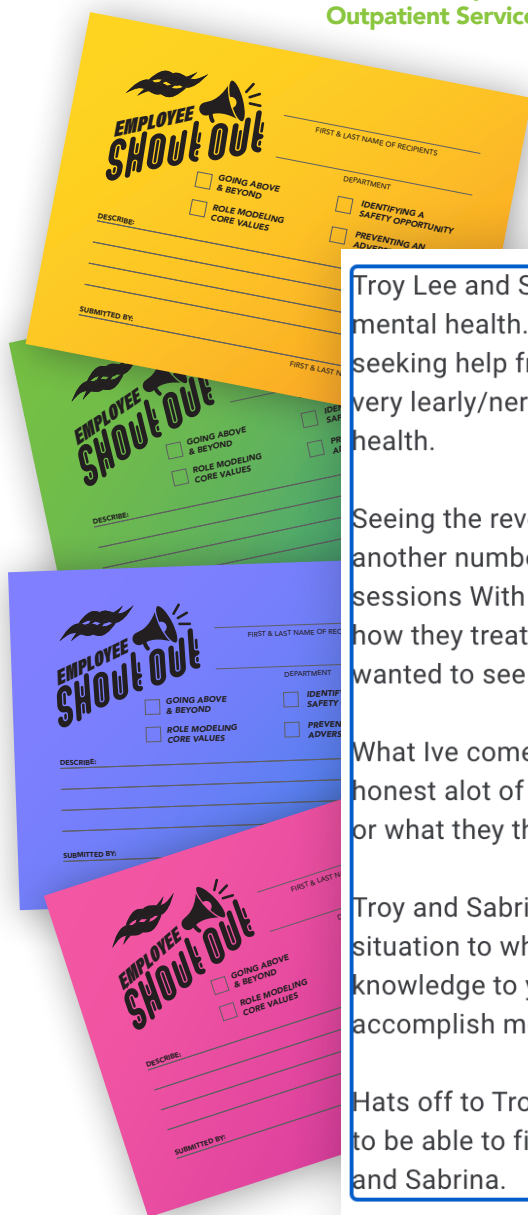


Google reviews are essential because they build trust, improve search rankings, and increase visibility, helping those in search of services find NCHC and trust the services that we provide. Positive reviews influence healthcare decisions, while feedback provides insights for improvement. Last week, NCHC received this amazing 5-star review for the work of our Outpatient Services Team: Troy Lee, Therapist, and Sabrina Spets, Nurse Practitioner.

TROY LEE
MSW, APSW
Mental Health Therapist, IT
Outpatient Services



SABRINA SPETS
PMHNP-BC
Psychiatric
Nurse Practitioner
Outpatient Services



Troy Lee and Sabrina Spatz are single-handedly the reason for the growth I've had in my mental health. To be honest based on the last place(arbor mental health services) I tried seeking help from with my mental health and the "answers" I got from that place made me very leary/nervous to reach out to anyone ever again to seek assistance with my mental health.

Seeing the reveiws on NCHC made me even more worried that I was going to be treated like another number or just another person with a list of problems that don't matter. After a few sessions With Troy and Sabrina i realized quickly with how they communicated with me and how they treated me that I knew I was in the right place with people who actually cared and wanted to see my mental health successes.

What Ive come to realize is that I get and understand the rap that this place gets. To be honest alot of it is probably people who are upset because they aren't getting what they want or what they think they need.

Troy and Sabrina are the type of people who will listen to what you have to say, apply your situation to what they have learned and what they have been taught and will apply their knowledge to your situation for the best mental outcome of whatever it is your trying to accomplish mentally.

Hats off to Troy Lee and Sabrina Spatz. You guys are what the mental health field truly needs to be able to find success in your mental health. The industry needs more people like Troy and Sabrina.



EXPLORE YOUR NORTH CENTRAL HEALTH CARE

2025 EMPLOYEE BENEFIT PACKAGE



Open Enrollment runs from October 21st through November 1st, 2024



Enroll in the 2025 benefit coverages during Open Enrollment!

Make the most of this opportunity to review your benefit changes and select options that best meet your needs and those of your family. During open enrollment, you can get answers to your questions and make updates, changes, or cancellations to your coverage.

Visit [norcen.org/OpenEnrollment](https://www.norcen.org/OpenEnrollment) for helpful resources like:

BENEFIT BREAKDOWN VIDEO

With Bo Johnson, HR Specialist



Benefit Breakdown Video - a video overview of plan details, premium breakdowns, and additional Open Enrollment details with Bo Johnson, HR Specialist for North Central Health Care.

YOU BENEFIT GUIDE 2025

A Comprehensive Resource Guide



YOU Benefit 2025 - a comprehensive benefit resource guide for NCHC Employees to utilize while reviewing benefits. Inside, find a complete listing of all benefits available to North Central Health Care Employees and corresponding details.

BENEFITS AT A GLANCE

The 2025 Benefit Highlights You Should Know.



Benefits At-a-Glance - a condensed PDF highlighting the most referenced benefit details, like premiums and deductibles, so you can easily compare plans side-by-side. Download this document for a quick view of this year's premium updates, contribution maximums, and any additional plan changes you should know about in 2025.

During Open Enrollment you will be able to make changes to your benefit elections for the upcoming plan year:

- Add or terminate benefit coverage
- Add or remove dependents

You are **REQUIRED** to re-enroll in your health, dental, vision, flexible spending accounts, accident, critical illness, and/or short term disability plans for 2024.

**THESE BENEFITS
DO NOT CARRY OVER!**

**Have Questions About
Open Enrollment or Benefits?**

Contact: Bo Johnson, Wausau HR
715.841.5164 or bjohnson@norcen.org

Contact: Jacque Krause,
Antigo/Merrill HR
715.539.2514 or jkrause@norcen.org

OPEN ENROLLMENT | OCT. 21 - NOV. 1, 2024



WHAT'S FOR LUNCH?

WAUSAU CAMPUS EMPLOYEE CAFETERIA
OPEN TO ALL NCHC & WAUSAU CAMPUS EMPLOYEES

MONDAY – FRIDAY

Grab-N-Go 8 am – 6:30 pm

The Employee Cafeteria is Closed.

Lunch 10 am – 2 pm

Soup, Salad Bar & Hot Food Bar

Soup Served until 6:30 pm or until sold out.

WEEKDAY SALAD BAR &
HOT FOOD BAR \$.45/OUNCE

Daily Hot Sandwich Menu

FEATURING DAILY SPECIALS LIKE GRILLED BEEF & CHEDDAR, CHEESEBURGERS, BBQ SANDWICHES, TUNA MELTS, PIZZA & MORE!!
Make your own cold or hot sandwich with fixins' OR self-serve at the salad bar.

OCTOBER 21 – 25, 2024

	MONDAY	TUESDAY	WEDS	THURSDAY	FRIDAY
MAIN ENTRÉE	Scalloped Potatoes & Ham Brussel Sprouts	Vegetable Beef Stew Biscuit Creamy Coleslaw	Broccoli Cheese Stuffed Chicken Mashed Potatoes Carrots	Baked Chicken Drumstick Loaded Mashed Potatoes Green Beans	Baked Spaghetti Breadstick Corn
SOUP	Cheesy Chicken Salsa Soup	Chicken Noodle Soup	Cheesy Broccoli Soup	Stuffed Green Pepper Soup	Vegetable Soup
SANDWICH	Reuben/Rachel Sandwich	Philly Cheese steak	Chicken Quesadilla	Potato Bar	Hot Dog Bar
DESSERT	Brownie	Bread Pudding with Caramel Sauce	Pudding	Carrot Cake with Cream Cheese Frosting	Rice Krispie Treat

OCTOBER 28 – NOV 1, 2024

	MONDAY	TUESDAY	WEDS	THURSDAY	FRIDAY
MAIN ENTRÉE	Ranch Pork Medallions Baked Yams Mixed Veggies	Chicken Lasagna Zucchini & Tomatoes Breadstick	Baked Fish Cheesy Baked Potatoes Seasoned Cabbage	Roast Turkey and Gravy Parslied Carrots Dinner Roll	Crab Cakes Boiled Potatoes Creamed Peas
SOUP	Turkey Dumpling Soup	Taco Soup	Beef Noodle Soup	Cream of Broccoli Soup	Chili Soup
SANDWICH	Hamburger on Bun	Monte Cristo Sandwich	Homemade Pizza	Nacho Bar	Shredded Pork on a Bun
DESSERT	Banana Split Dessert	Frosted Banana Bar	Caramel Apple Crisp	Frosted Chocolate Cake	Caramel Brownie





THE BISTRO

NOW OPEN 7 DAYS A WEEK! | WEEKDAYS 7:30AM - 3PM | WEEKENDS: 9:30AM - 5PM

THE BISTRO WILL BE CLOSED ON WEEKENDS FROM 1-1:30PM TO ACCOMMODATE STAFF BREAKS

*HOT FOOD IS AVAILABLE AT THE BISTRO DAILY UNTIL 2:30PM *



SPECIAL OF THE WEEK

Tuna Melt Panini

BEEF PATTY | FRIED ONIONS
CHEDDAR CHEESE | 1000 ISLAND

LATTE OF THE WEEK

Pumpkin Spice Latte

Rich blend of espresso & steamed milk paired with
cloves, nutmeg, cinnamon & vanilla.

**\$1 OFF LARGE LATTES
EVERY MONDAY!**

**Please note: All sales subject to Sales Tax.*



Ice Cream

ICE CREAM CONE1.50

ICE CREAM SUNDAE2.25



- build your own - **BREAKFAST SANDWICH**

EGG + CHEESE3.00

EGG, MEAT + CHEESE4.00

PICK YOUR BREAD

CROISSANT | BAGEL
ENGLISH MUFFIN

PICK YOUR MEAT

HAM | SAUSAGE | BACON